



**GATEWAY  
MINING LTD**  
ASX Code:GML



## **Building the next WA gold success story**

Gidgee Gold Project  
North Murchison, WA

Investor Update | August 2022  
Mark Cossom, Managing Director

# Important Information and Disclaimer

## Forward Looking Statements

- This presentation has been prepared by Gateway Mining Ltd (GML). The information contained in this presentation is a professional opinion only and is given in good faith. Certain information in this document has been derived from third parties and through Gateway Mining has no reason to believe that it is not accurate, reliable or complete, it has not been independently audited or verified by GML.
- This presentation is in summary form and does not purport to be all inclusive or complete. Recipients should conduct their own investigations and perform their own analysis in order to satisfy themselves as to the accuracy and the completeness of the information, statements and opinions contained.
- This is for information purposes only. Neither this nor the information contained in it constitutes an offer, invitation, solicitation or recommendation in relation to the purchase or sale of GML shares in any jurisdiction. This does not constitute investment advice and has been prepared without taking into account the recipient's investment objectives, financial circumstances or particular needs and the opinions and recommendations in this presentation are not intended to represent recommendations of particular investments to particular persons. Recipients should seek professional advice when deciding if an investment is appropriate. All securities transactions involve risks, which include (among others) the risk of adverse or unanticipated market, financial or political developments.
- To the fullest extent permitted by law, GML, its officers, employees, related bodies corporate, agents and advisors do not make any representations or warranty, express or implied, as to the currency, accuracy, reliability or completeness of any information, statements, opinions, estimated, forecasts or other representations contained in this presentation. No responsibility for any errors or omissions from this arising out of negligence or otherwise is accepted.
- Any forward looking statements included in this document involve subjective judgment and analysis and are subject to uncertainties, risks and contingencies, many of which are outside the control of, and may be unknown to, GML. In particular, they speak only as of the date of this document, they assume the success of GML's strategies, and they are subject to significant regulatory business, competitive and economic uncertainties and risks. Actual events may vary materially from the forward-looking statements and the assumptions on which the forward-looking statements are based. Recipients of this document are cautioned to not place undue reliance on such forward-looking statements.

## Competent Person Statement

- The information in this presentation that relates to Exploration Results and Mineral Resources has been extracted from various GML ASX announcements and are available to view on the GML website at [www.gatewaymining.com.au](http://www.gatewaymining.com.au) or through the ASX website at [www.asx.com.au](http://www.asx.com.au) (using ticker code "GML")
- GML confirms that it is not aware of any new information or data that materially affects the information included in the original market announcement. The company confirms that the form and context in which the Competent Person's findings are presented have not been materially modified from the original market announcement.

## Exploration Targets Cautionary Statement

- This presentation may comment on and discuss Gateway Mining Limited's exploration in terms of target size and type. The information relating to Exploration Targets should not be misunderstood or misconstrued as an estimate of Mineral Resources or Ore Reserves. The potential quantity and quality of material discussed as Exploration Targets is conceptual in nature since there has been insufficient work completed to define them as Mineral Resources or Ore Reserves. It is uncertain if further exploration work will result in the determination of a Mineral Resource or Ore Reserve.
- Any Exploration Targets referred to in this presentation are not Mineral Resources. The Potential quantity and grade of the Exploration targets are conceptual in nature and there has been insufficient exploration to determine a Mineral Resource. There is no certainty that additional exploration work will result in the estimation and reporting of Mineral Resources.

# Building a Significant Gold Company in the North Murchison

## TIER-1 LOCATION



- 1,000km<sup>2</sup> Gidgee Gold Project, 800km NE of Perth

## ROBUST RESOURCE



- Mineral Resource base totaling 449,000oz (Indicated and Inferred<sup>1</sup>)
- Part of a significant gold endowed system

## RECENT DISCOVERY SUCCESS



- New shallow discoveries – all within 5km radius
- Clear potential to grow Mineral Resource

## MAJOR DRILLING COMMITMENT



- Over 60,000m of air-core, RC and diamond drilling underway in 2022
- Well-funded with ~\$3.7m in cash and \$1.6m in listed equities

## CORPORATE STRENGTH



- Experienced and successful technical team with strong track record
- Recent board progression to drive next phase of growth
- 1:10 share consolidation in progress
- Supportive top-20 shareholders



<sup>1</sup> 8,165,000 tonnes @1.7g/t for 449,000 ounces of contained gold. See ASX announcement dated 14 December 2021.

# Corporate Summary

# 4



## BOARD OF DIRECTORS



Debbie Fullarton	Non-Executive Chair
Mark Cossom	Managing Director
Trent Franklin	Non-Executive Director
Peter Lester	Non-Executive Director
Scott Brown	Non-Executive Director
Kar Chua	Company Secretary

## CAPITAL STRUCTURE



	GML
ASX Ticker	
Shares on issue <sup>1</sup>	2,260,106,367
Executive Performance Options	33,000,000
Cash balance as at 30 Jun 2022	\$3.73M
Listed Investments as at 30 Jun 2022*	\$1.60M
Share Price	\$0.01
Market Capitalisation	\$22.6M
Enterprise Value	\$17.3M

## MAJOR SHAREHOLDERS



Harmanis Holdings	12.29%
OMNI GeoX	6.68%
L11 Capital	3.40%
Enable Investment	2.17%
Top 20	38.97%
Directors (Directly & Indirectly)	12.69 %

\*Includes: 116,798,363 shares in **DiscovEx Resources Ltd** (ASX: DCX)  
20,000,000 shares in **Strickland Metals Ltd** (ASX:STK)



# Highly Successful and Experienced Leadership Team

**Mark Cossom**  
Managing Director

- Executive Director since October 2019
- Geologist with +25-years experience in gold exploration, mine operations and corporate management
- Former General Manager - Geology & Exploration at Doray Minerals Ltd
- Former Principal Geologist (SE Asia) at Harmony Gold Ltd

**Debbie Fullarton**  
Non-Exec Chair

- Chartered Accountant with +30 years experience in various senior corporate and financial roles
- Former Chief Executive Officer of Westgold Ltd
- Former Director of Auris Minerals Ltd
- Director of De Beers Australia Exploration Ltd

**Trent Franklin**  
Non-Exec Director

- Experienced Corporate Advisor holding qualifications in Geology/Geophysics, Finance, Financial Planning and Insurance Broking
- Managing Director of Enrizen Financial Group
- Former Director of the Australian Olympic Committee Inc. and Australian Water Polo Inc.

**Peter Lester**  
Non-Exec Director

- Mining Engineer with +40 years experience in various senior operational and corporate roles with Newcrest Mining Ltd, Oxiana/OZ Ltd and Citadel Resources Group Ltd
- Former Non-Executive Chair of Doray Minerals Ltd
- Non-Executive Chair Helix Resources Ltd and Aurora Energy Metals Ltd

**Scott Brown**  
Non-Exec Director

- Company Director with +25 years of broad experience in both the public and private sector

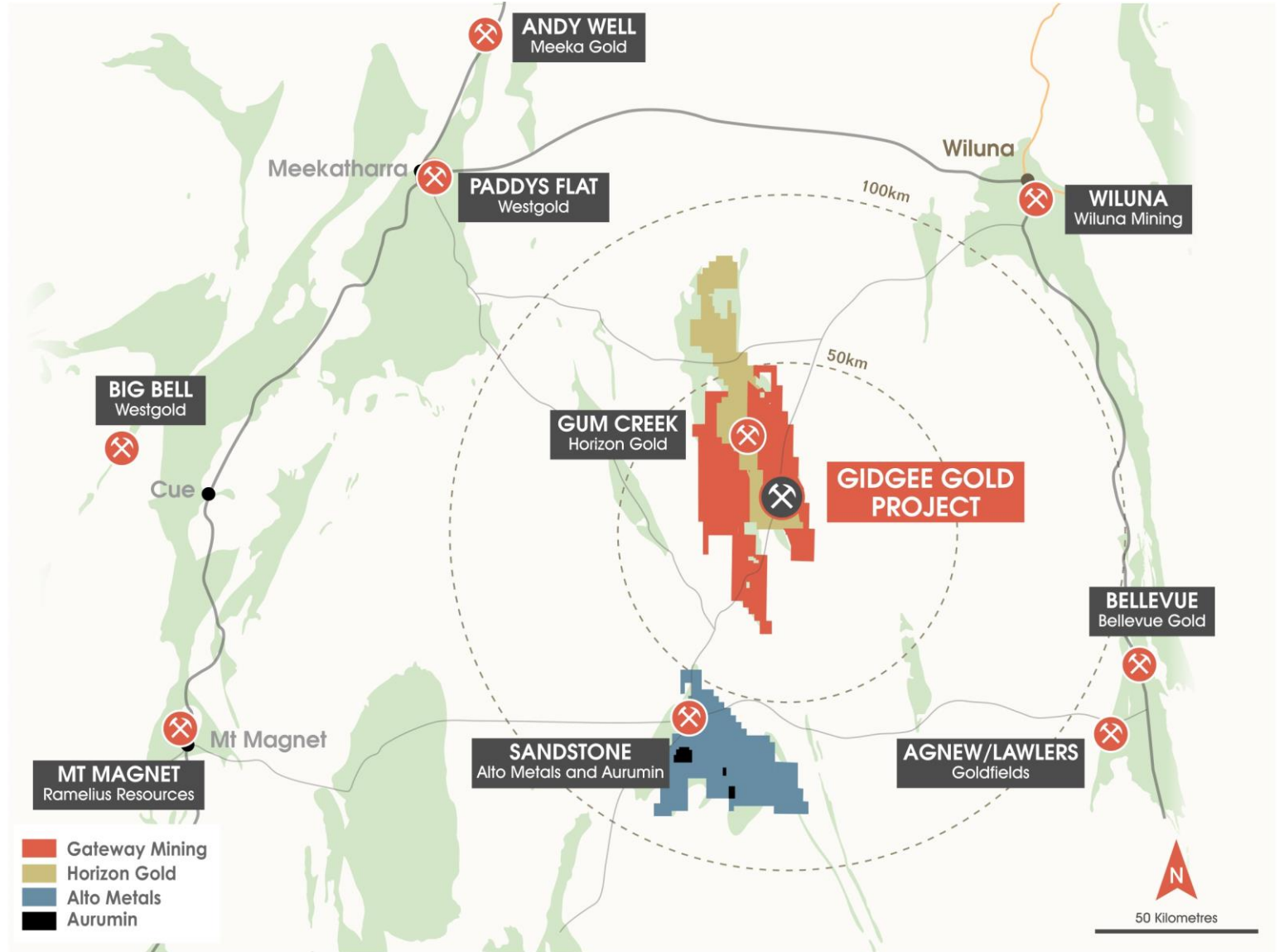
**Peter Langworthy**  
Technical Consultant

- +35-year experienced explorer and project developer
- Led the highly successful exploration team at nickel producer Jubilee Mines Ltd
- Former Technical Director of Talisman Mining Ltd
- Founding Director of Capricorn Metals Ltd
- Founding Director of Northern Star Resources Ltd



# Tier 1 Location

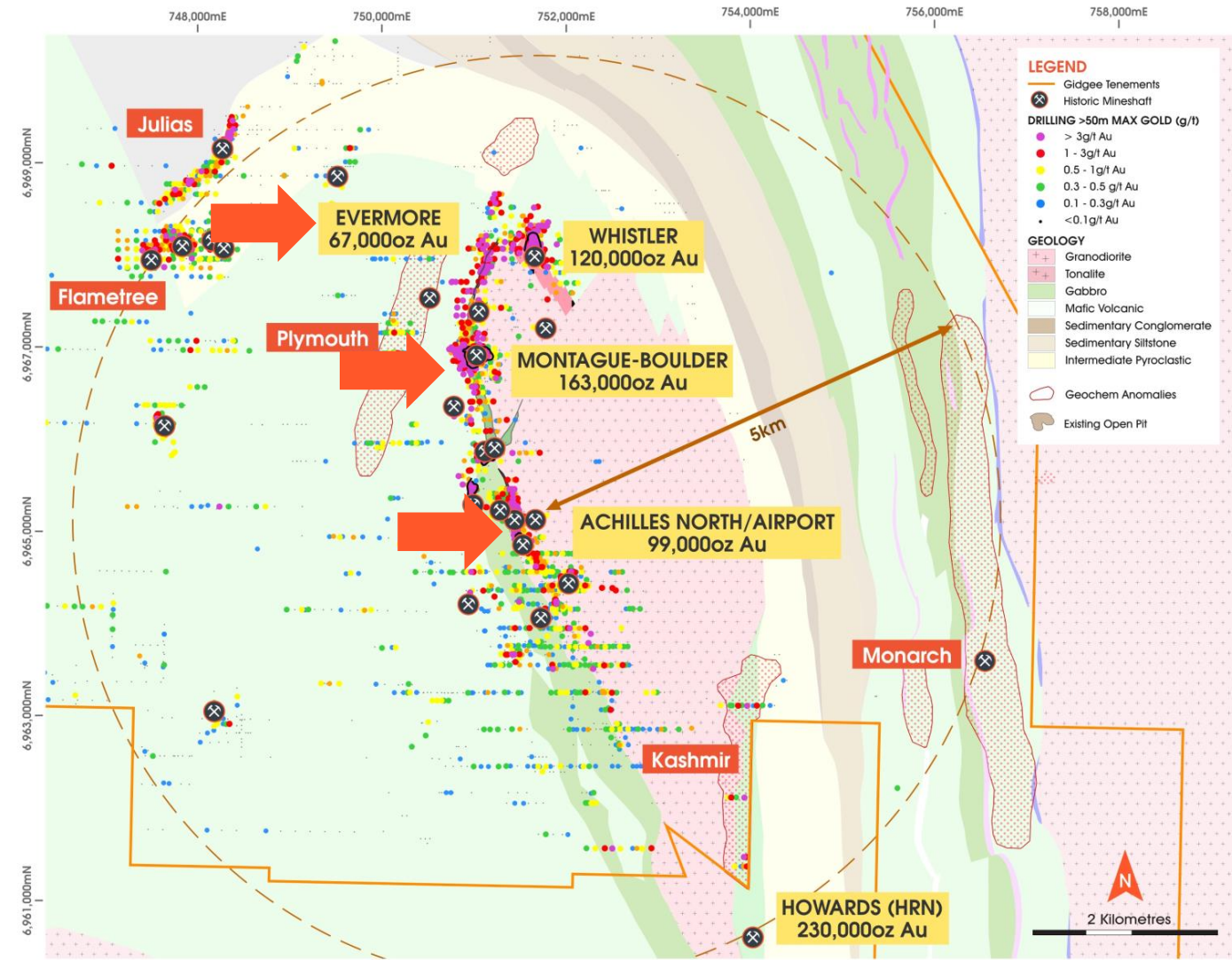
# 6



# Robust Resource Growth

## Moving to the next level

- 87% increase in Mineral Resource to 449koz<sup>1</sup> delivered late 2021
- Includes high-grade Indicated Resource of 81,000oz at 3.4g/t<sup>2</sup>
- 67% (300koz) Resources located within upper 100m – shallow, high-grade ounces
- Maiden Resources for Evermore (67koz) and Achilles North/Airport (99koz) discoveries
- Substantial scope for further growth – focus of current RC campaign



<sup>1</sup> 8,165,000 tonnes @1.7g/t for 449,000 ounces of contained gold. See ASX announcement dated 14 December 2021.

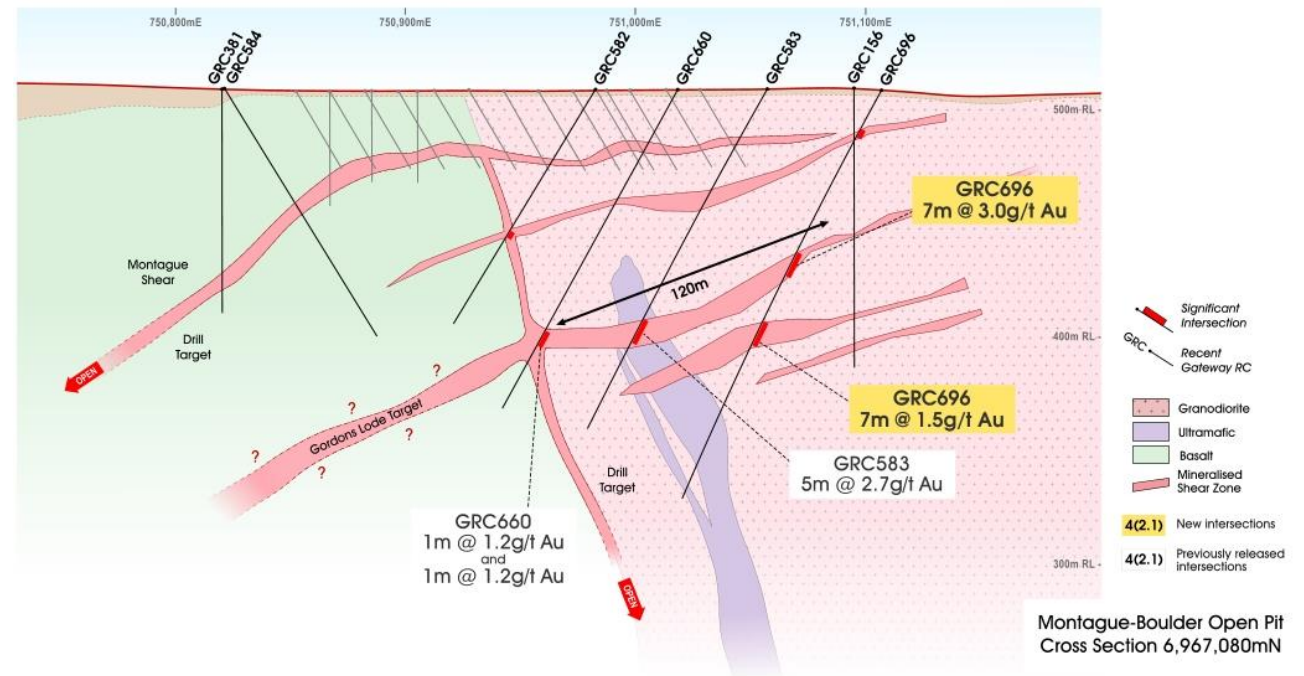
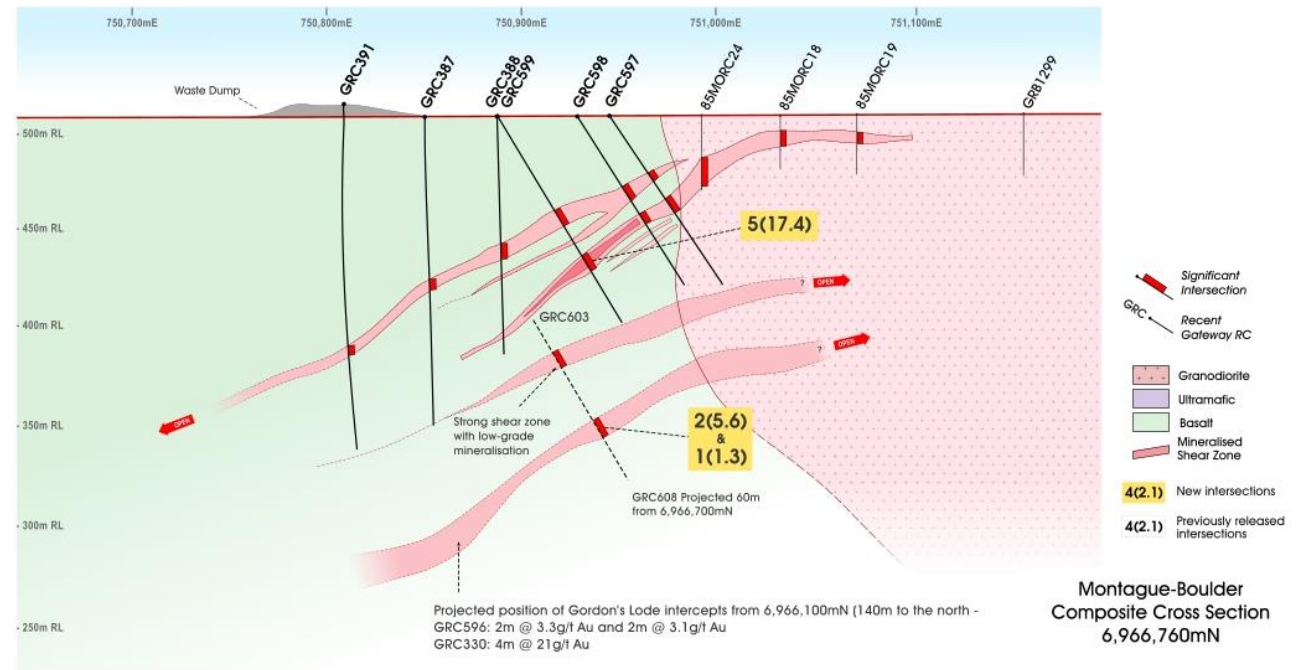
<sup>2</sup> 743,000 tonnes @ 3.4g/t for 81,000 ounces of contained gold. See ASX announcement dated 14 December 2021.



# Montague Resource

## Robust Indicated and Inferred Base

- 163,000oz Mineral Resource
  - Includes high-grade 67,000oz @ 4.0g/t Au Indicated<sup>1</sup>
- Located on granted Mining Lease
- Preliminary metallurgical test work indicates free-milling characteristics<sup>2</sup>
- Further potential for growth within the granodiorite:
  - GRC583: 5m @ 2.7g/t Au from 115m (Granodiorite host)
  - GRC696: 7m @ 3.0g/t Au from 84m (Granodiorite host)
- To be targeted in current RC drilling campaign



<sup>1</sup> 522,000t @ 4.0g/t for 67,000oz Indicated; 1,556,000t @ 1.2g/t for 96,000oz Inferred. See ASX announcement dated 14 December 2021

<sup>2</sup> See ASX Release dated 28 April 2021

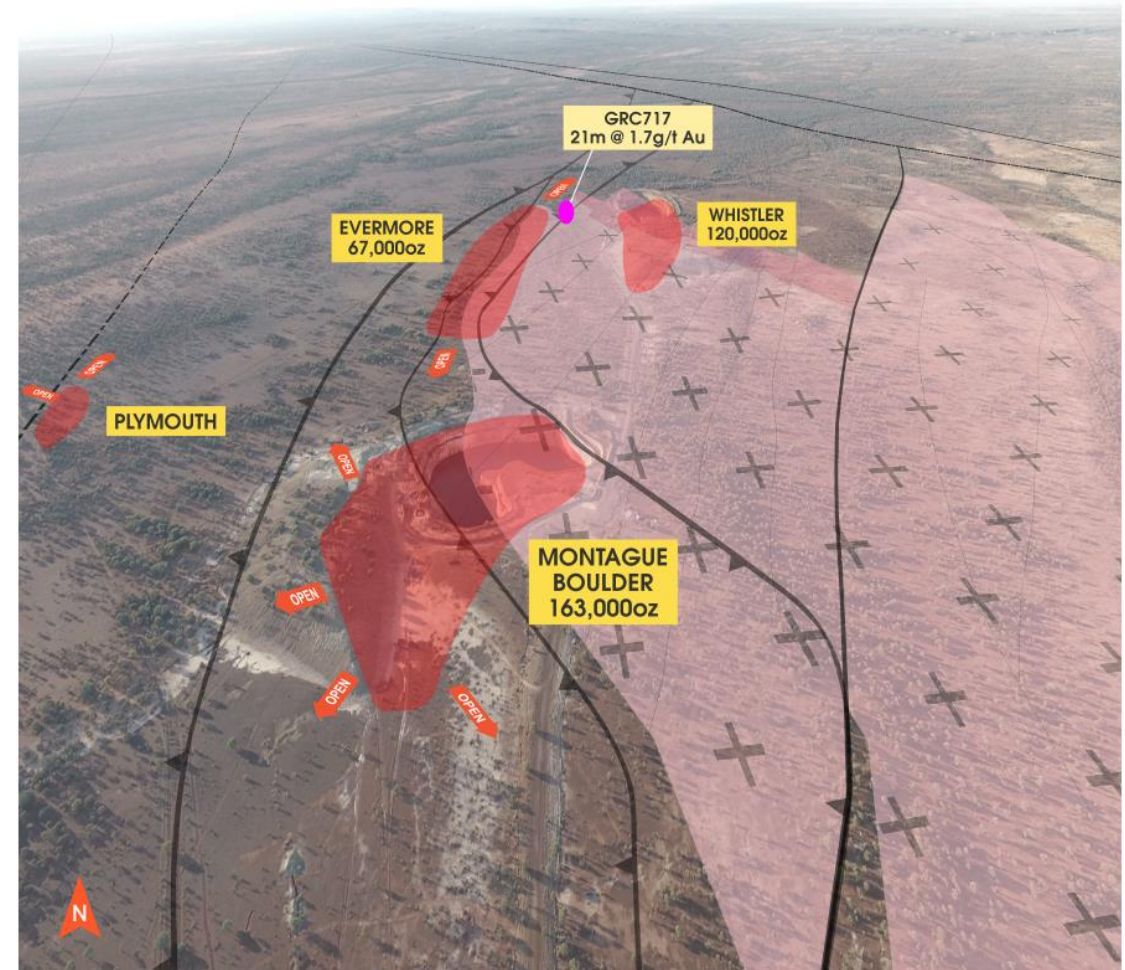


# New Resources – Evermore Discovery

Emerging shallow discovery with substantial upside

- New discovery in October 2020
- Maiden Inferred Mineral Resource 67,000oz<sup>1</sup>
- Similar geology to Montague-Boulder
- ~11,200m of RC and diamond drilling completed since discovery
- Dec 2021 RC drilling has opened the northern strike extensions
- Drilling within the granodiorite “nose” toward Whistler:
  - *GRC717: 21m @ 1.7g/t Au from 132m including 2m @ 9.3g/t Au*
- Drilling along strike of the main Evermore structure:
  - *GRC718: 8m @ 1.8g/t Au from 42m*
- Major target of current RC drilling campaign

<sup>1</sup> 1,319,000t @ 1.6g/t for 67,000oz Inferred. See ASX announcement dated 14 December 2021

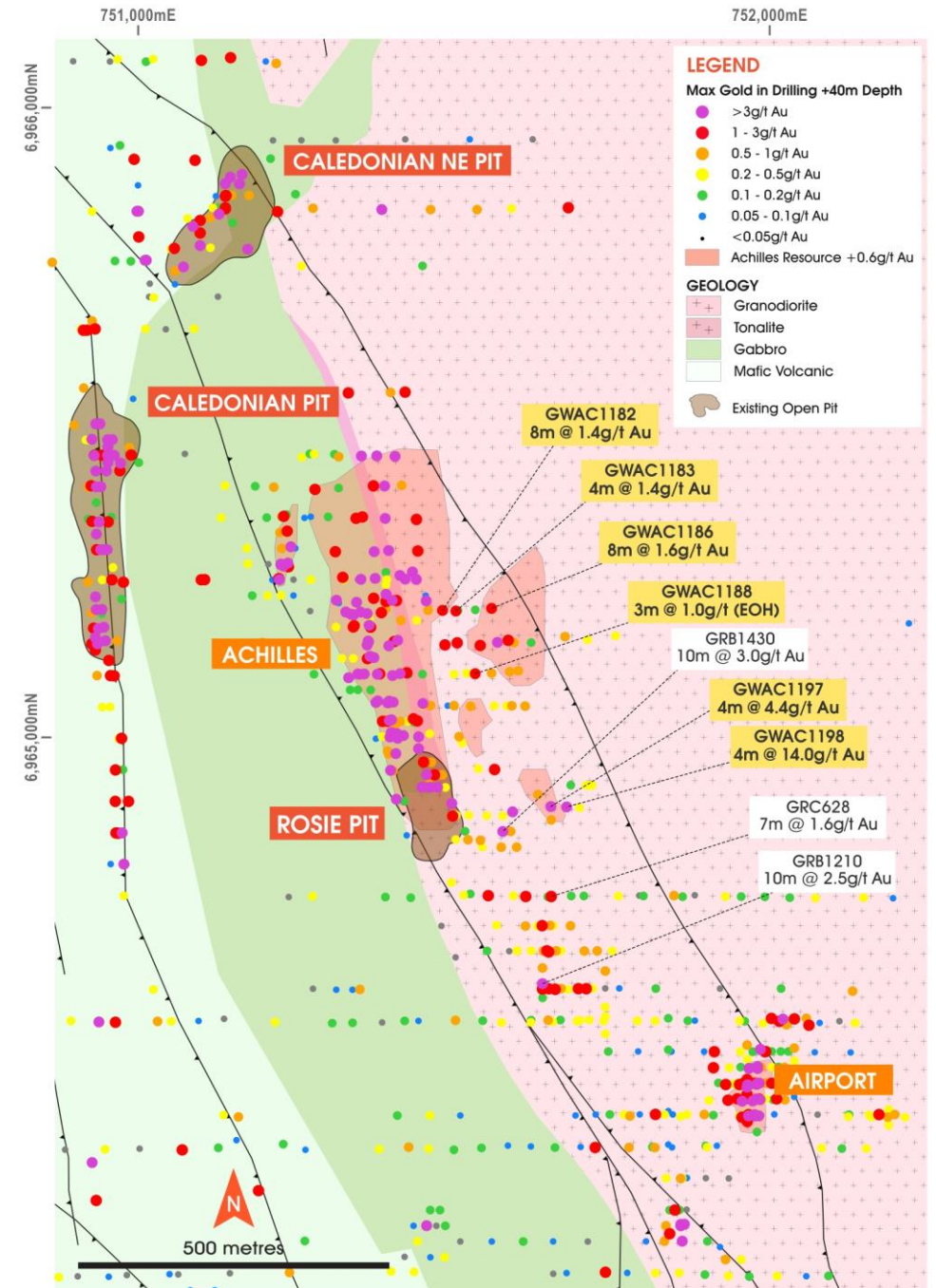


# New Resources – Achilles/Airport

Extensive oxide gold zone – still open

- Oxide gold discovery made by Gateway in 2019
- Shallow 99,000oz Resource, including 221,000t @ 2.0g/t for 14,000oz Indicated<sup>1</sup>
- Located on granted Mining Lease
- Systematically RC drilled 500m along strike from Rosie pit
- Recent near surface, high-grade oxide results outside of Resource:
  - GWAC1198: 4m @ 14.0g/t Au from 32m
  - GWAC1197: 4m @ 4.4g/t Au from 44m
  - GWAC1186: 8m @ 1.6g/t Au from 28m
  - GWAC1182: 8m @ 1.4g/t Au from 28m
- To be followed up in current RC drilling campaign, as well as easterly extents to granodiorite hosted mineralisation

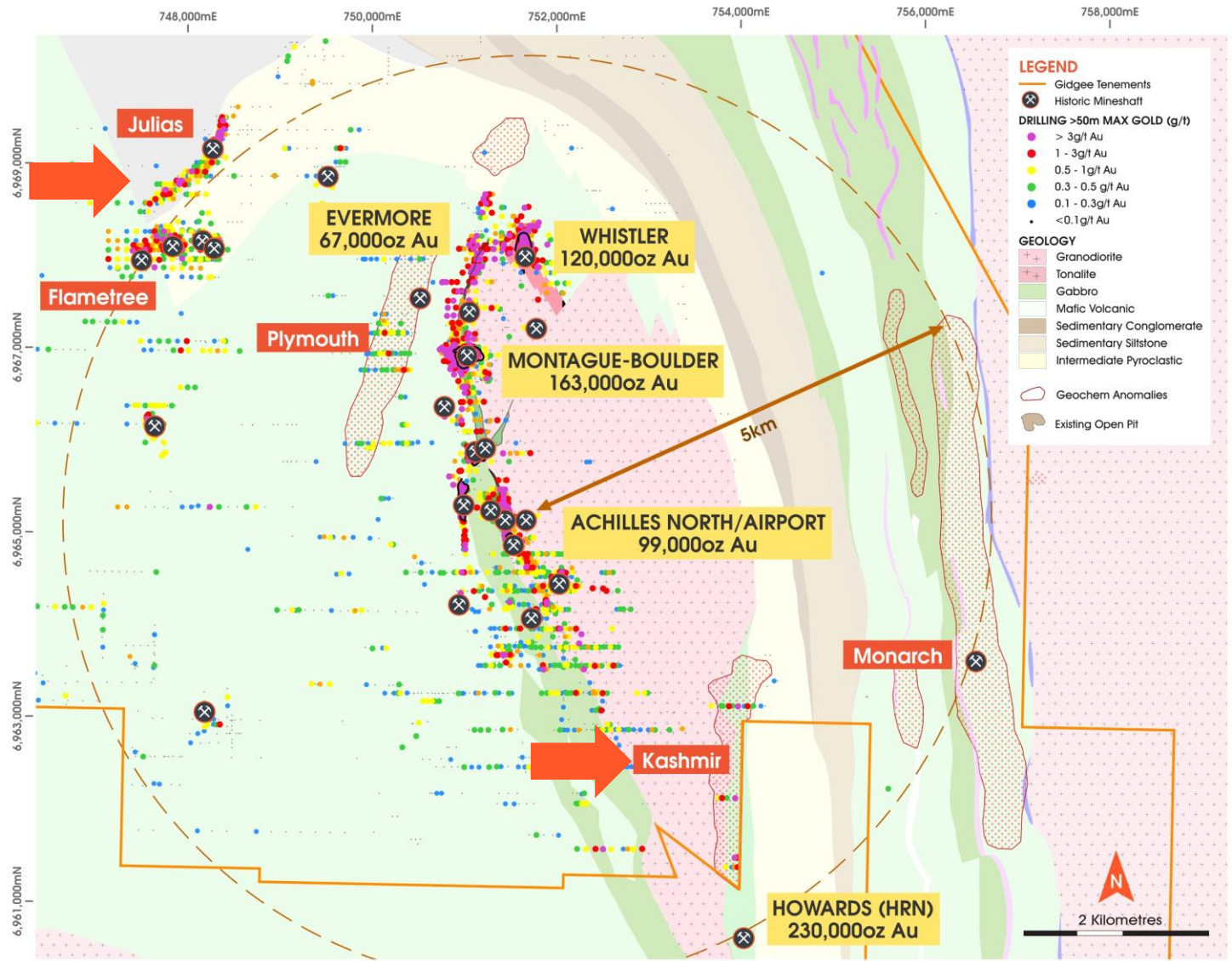
<sup>1</sup> 221,000t @ 2.0g/t for 14,000oz Indicated, 1,847,000t @ 1.4g/t for 85,000oz Inferred. See ASX announcement dated 14 December 2021





# New Shallow Targets

All within 5km of current Resources

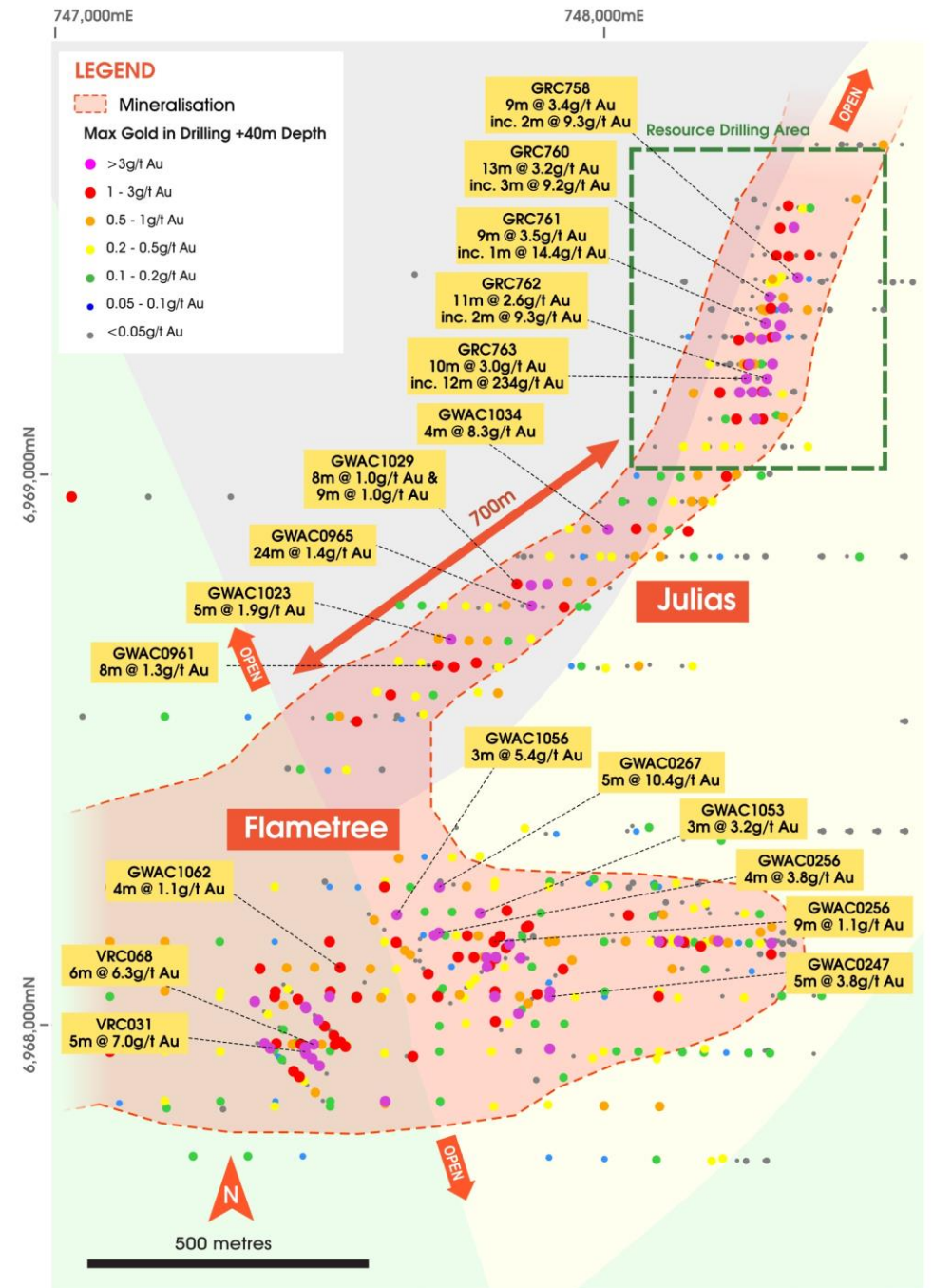




# Julias - Flametree

## An emerging large-scale oxide gold discovery

- Shallow, oxide gold trend first drilled by Gateway in 2008
- Recent Julias RC results confirm solid mineralisation over 500m:
  - GRC760: 13m @ 3.2g/t Au from 67m
  - GRC762: 11m @ 2.6g/t Au from 24m
  - GRC763: 10m @ 3.0g/t Au from 38m, and 12m @ 2.4g/t Au from 60m
- Significant widths of oxide gold mineralisation intersected for over 800m south:
  - GWAC1034: 4m @ 8.3g/t Au from 56m
  - GWAC0965: 24m @ 1.4g/t Au from 16m
  - GWAC1023: 5m @ 1.9g/t Au from 36m
- Indications mineralisation joins with Flametree target to south:
  - GWAC0267: 5m @ 10.4g/t Au from 52m
  - GWAC1056: 3m @ 5.4g/t Au from 51m
- Julias north-east trend completely open – recent air-core results pending
- Julias in-fill RC drilling complete, results pending

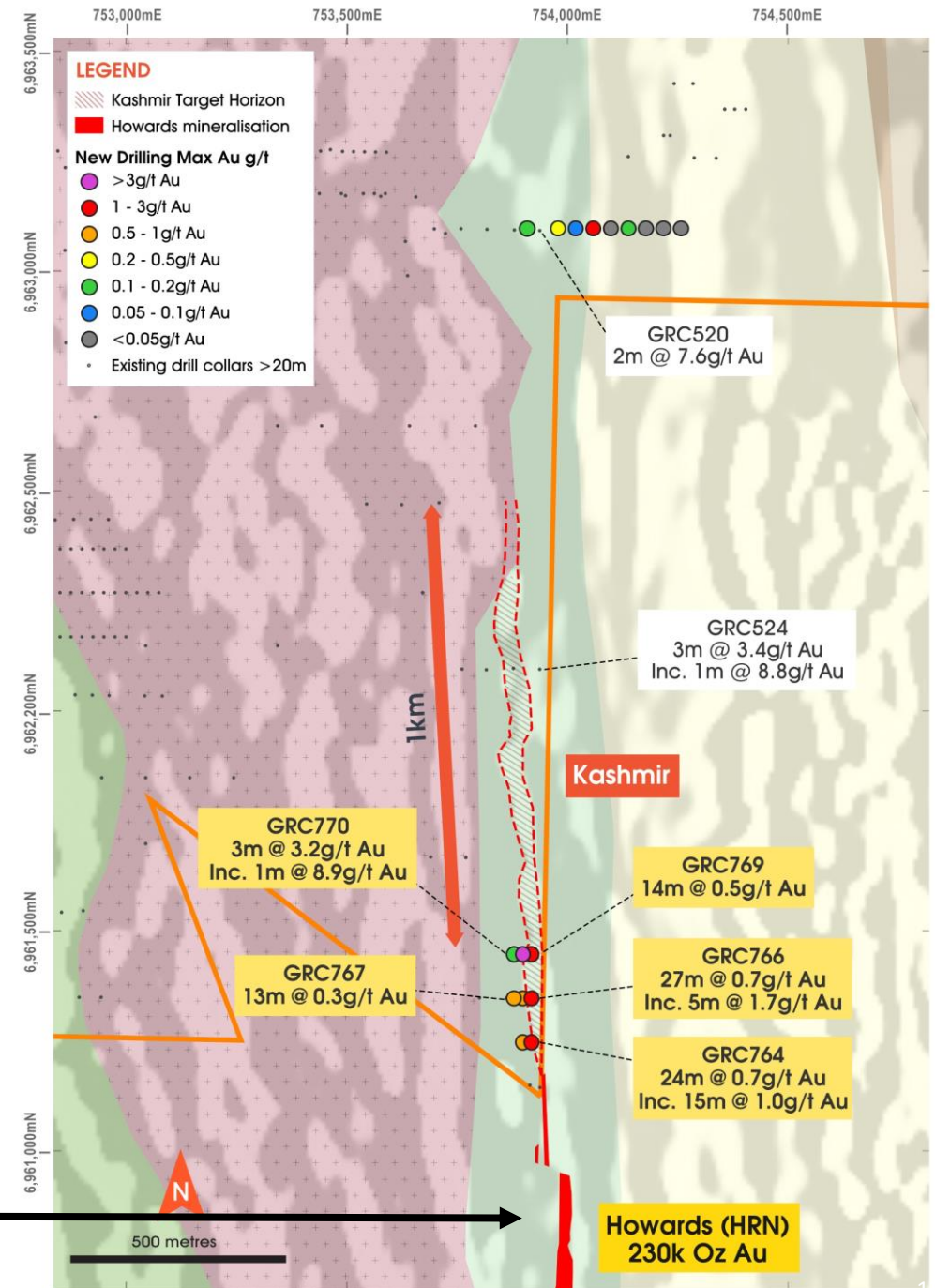


# Kashmir

## 2.5km long emerging discovery

- Major 2.5km-long gold-in-soil anomaly defined by Gateway 2019-2020
- Directly along strike of 204koz Howards Resource (ASX : HRN)
- Located on unexplored Montague eastern margin
- Recent RC testing has confirmed the continuation of shallow gold mineralisation:
  - GRC770: 3m @ 3.2g/t Au from 7m
  - GRC764: 15m @ 1.0g/t Au from 15m
  - GRC520: 2m @ 7.9g/t Au from 3m
  - GRC766: 5m @ 1.7g/t Au from 36m
  - GRC524: 1m @ 8.8g/t Au from 59m
- Additional step-out RC drilling complete, results pending
- Potential to open up the entire 8km long eastern margin

Recent Horizon Gold (ASX : HRN) results\*:  
77m @ 1.1g/t Au from 64m  
65m @ 1.2g/t Au from 0m  
28m @ 1.5g/t Au from 102m





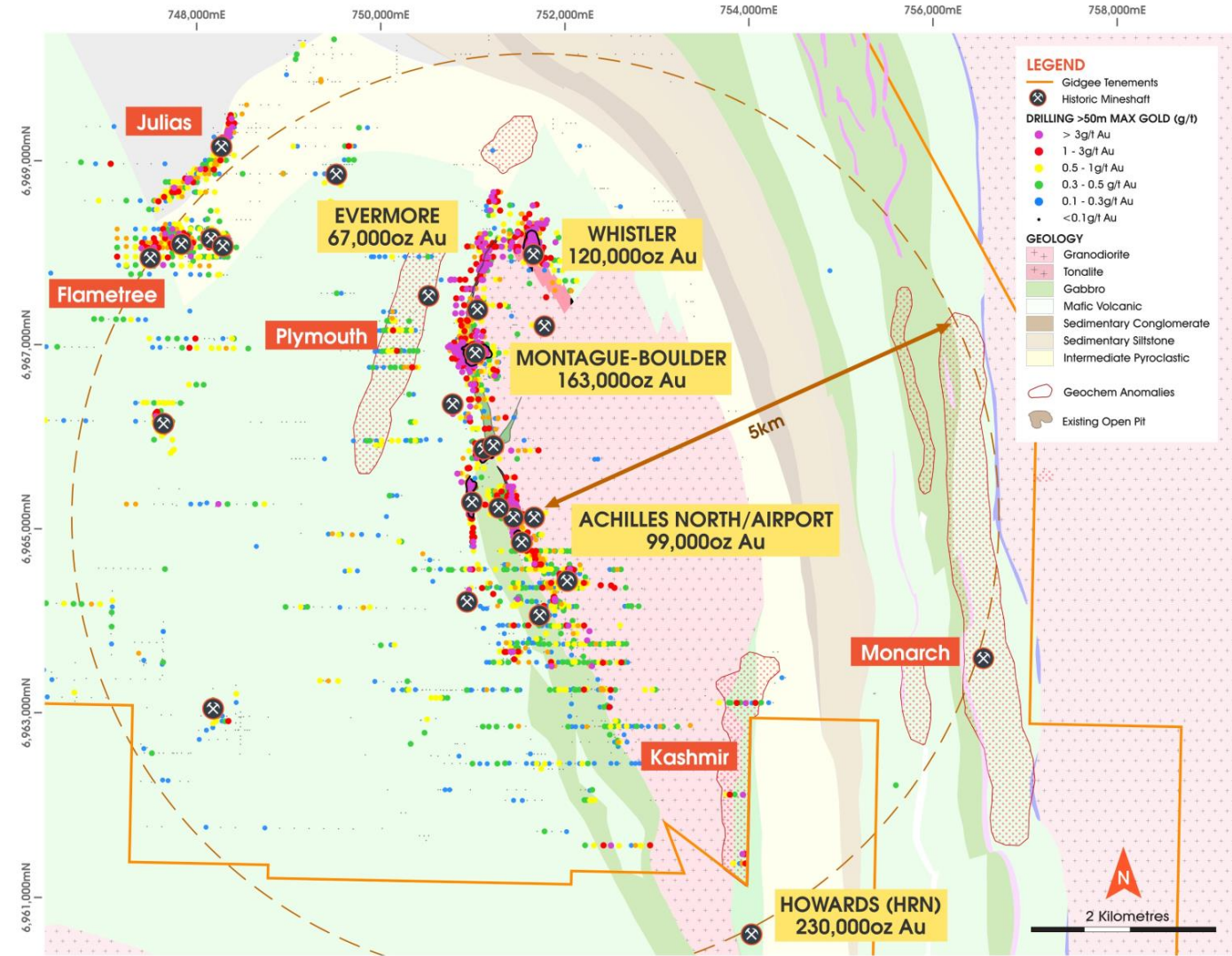
# The Big Picture





# Over 60,000m Of drilling underway for 2022

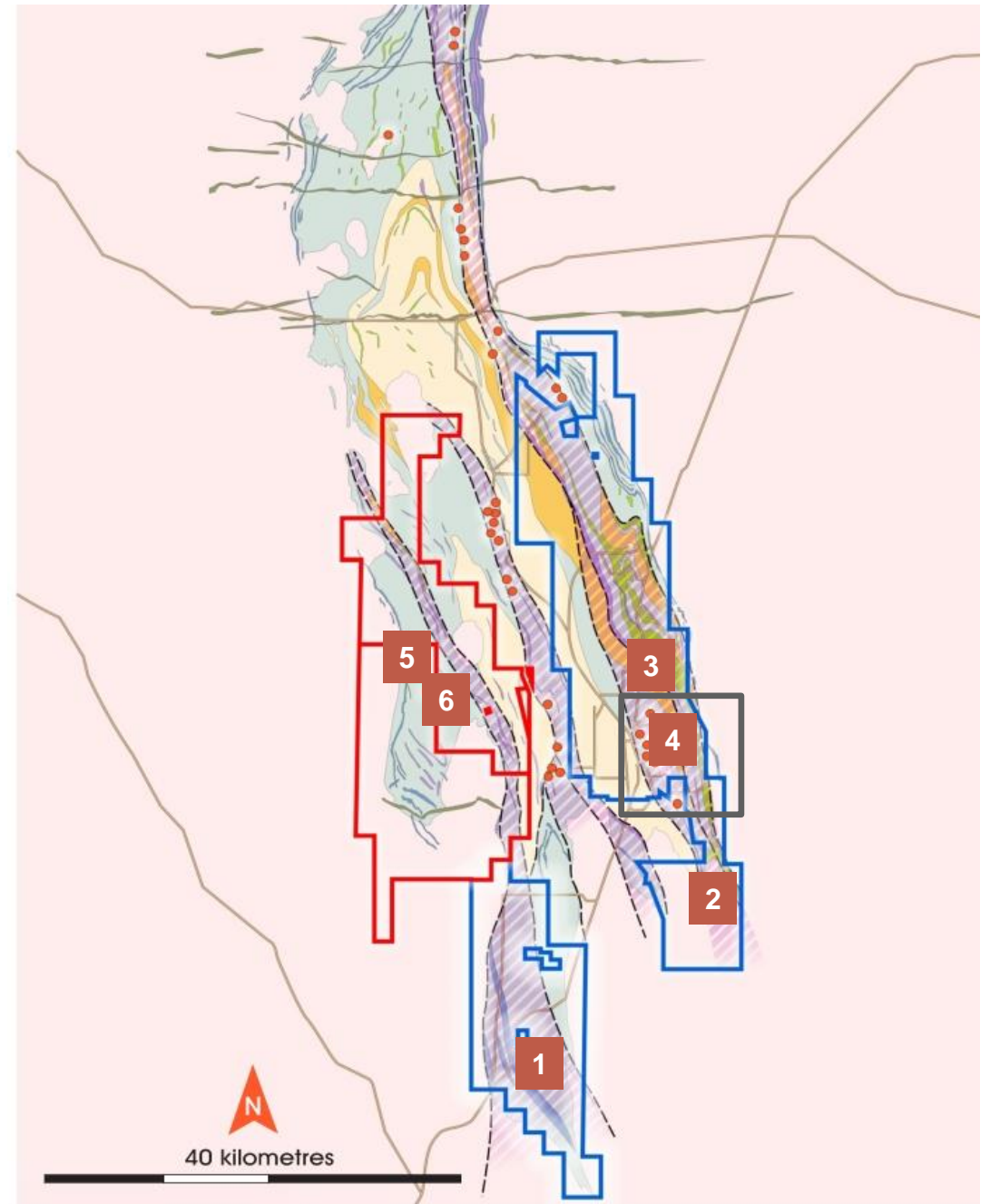
- Combination of air-core, RC and diamond
- AC along Julias, Achilles strike extensions complete – successful, results released
- RC drilling at Julias, Kashmir and Monarch complete – results pending
- Rolling ongoing RC programs across immediate Resource extensions and key targets within 5km radius over next three months
- **Next Mineral Resource upgrade scheduled for Q3 2022**



# Building our Pipeline

Multiple target areas across the broader package

1. **Woodley** – Extensive alluvial gold workings, with soil anomaly
2. **Season Well** – Interpreted blind granodiorite intrusion
3. **Whistler Nose** – Continuation of Whistler mineralisation around granodiorite nose
4. **Rosie East** – Extensive zones of granodiorite hosted gold mineralisation
5. **Hot Diggety** – Several historic RAB intercepts to be followed up
6. **Barrelmaker** – Several historic RAB intercepts to be followed up





# Summary

# 17





# Key Investment Takeaways

# 18

## LOCATION



- Focused gold explorer in a Tier-1 district

## FOCUSED ON RESOURCE GROWTH



- Over 60,000m of drilling underway in 2022 to expand the current 449koz Resource<sup>1</sup>

## SHALLOW OUNCES, BIG SYSTEM

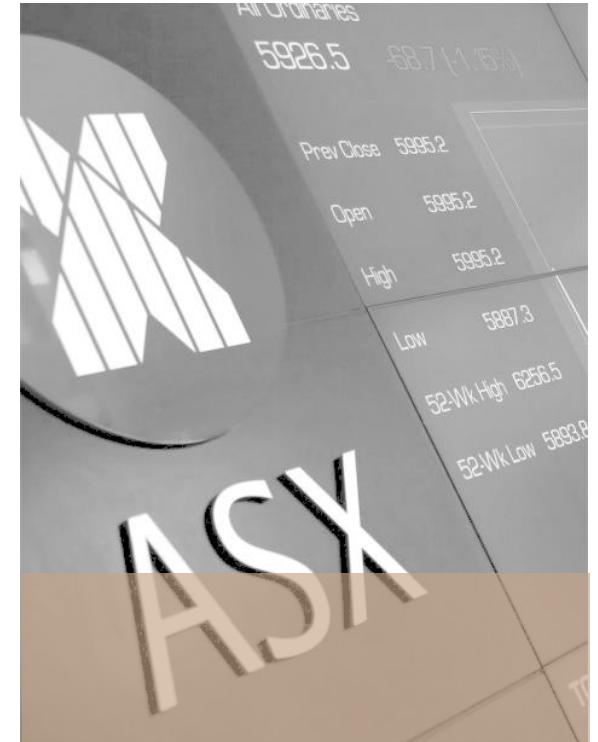


- Large gold system with clear potential for multiple sizeable shallow deposits

## SUCCESS



- Experienced and successful board and management team with strong track record



<sup>1</sup> 8,165,000 tonnes @1.7g/t for 449,000 ounces of contained gold. See ASX announcement dated 14 December 2021.



**GATEWAY  
MINING LTD**  
ASX Code:GML



**Thank You**

Investor Update | August 2022  
Mark Cossom, Managing Director